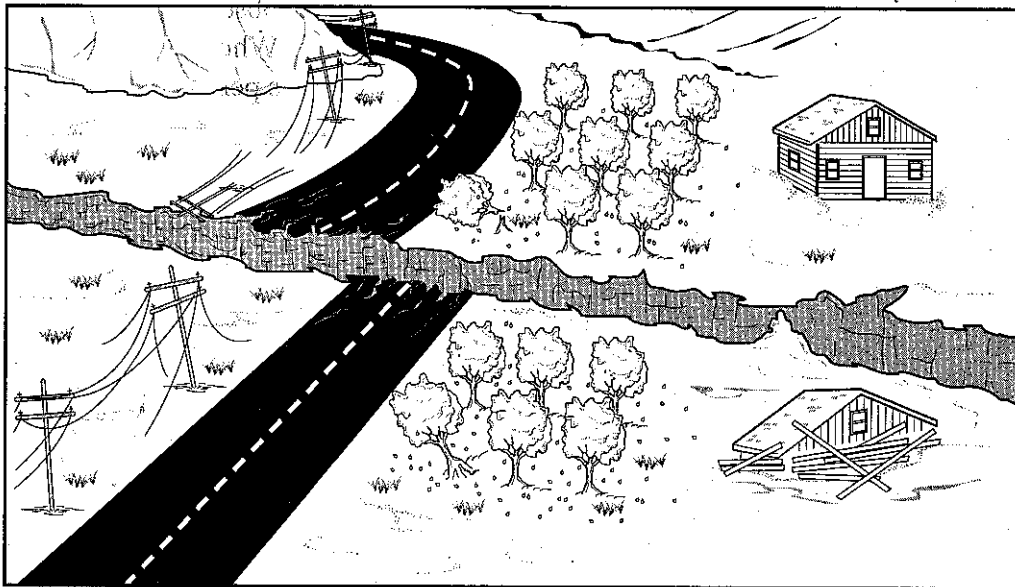


INQUIRY SKILL FOCUS Practice**Observe**

Use the illustration to answer the questions that follow. Write your answers on a separate sheet of paper.



- 1 Make and record at least five qualitative observations of the scene in the illustration.
- 2 Explain how you could make at least three quantitative observations if you were able to visit this scene.
- 3 Examine the observations you wrote for Questions 1 and 2. Are any of them actually explanations, or inferences? If so, which one(s)?
- 4 Is the following statement an observation or an inference? "The house collapsed at the same time that the poles fell down." Explain.
- 5 Is the following statement an observation or an inference? "The road damage is serious, and it will be very expensive to repair." Explain.
- 6 Is the following statement an observation or an inference? "The house is built on unstable land." Explain.
- 7 Is the following statement an observation or an inference? "The damage at this scene was caused by an explosion." Explain.
- 8 **Think It Over** Write a few sentences that would explain to classmates how to keep their observations separate from their inferences.